

## Research Article

**Cite this article:** Barnes ER, Jhala AJ, Knezevic SZ, Sikkema PH, Lindquist JL (2019) Soybean and common ragweed (*Ambrosia artemisiifolia*) growth in monoculture and mixture. *Weed Technol* **33**: 481–489. doi: [10.1017/wet.2018.119](https://doi.org/10.1017/wet.2018.119)

Received: 5 September 2018  
Revised: 1 December 2018  
Accepted: 20 December 2018  
First published online: 13 March 2019

**Associate Editor:**

Aaron Hager, University of Illinois

**Nomenclature:**

Common ragweed; *Ambrosia artemisiifolia* L.; soybean; *Glycine max* L. Merr.

**Keywords:**

Aboveground biomass; biomass partitioning; leaf area index; leaf area ratio; specific leaf area

**Author for correspondence:** Ethann R. Barnes, Email: [ethann.barnes@unl.edu](mailto:ethann.barnes@unl.edu) and John L. Lindquist, Email: [jlindquist1@unl.edu](mailto:jlindquist1@unl.edu)

# Soybean and common ragweed (*Ambrosia artemisiifolia*) growth in monoculture and mixture

Ethann R. Barnes<sup>1</sup>, Amit J. Jhala<sup>2</sup>, Stevan Z. Knezevic<sup>3</sup>, Peter H. Sikkema<sup>4</sup> and John L. Lindquist<sup>5</sup>

<sup>1</sup>Graduate Student, Department of Agronomy and Horticulture, University of Nebraska–Lincoln, Lincoln, NE, USA;

<sup>2</sup>Associate Professor, Department of Agronomy and Horticulture, University of Nebraska–Lincoln, Lincoln, NE, USA;

<sup>3</sup>Professor, Northeast Research and Extension Center, Haskell Agricultural Laboratory, University of Nebraska–Lincoln, Concord, NE, USA; <sup>4</sup>Professor, University of Guelph Ridgetown Campus, Ridgetown, ON, Canada and

<sup>5</sup>Professor, Department of Agronomy and Horticulture, University of Nebraska–Lincoln, Lincoln, NE, USA

**Abstract**

Understanding how plants alter their growth in response to interplant competition is an overlooked but complex problem. Previous studies have characterized the effect of light and water stress on soybean or common ragweed growth in monoculture, but no study has characterized soybean and common ragweed growth in mixture. A field study was conducted in 2015 and 2016 at the University of Nebraska–Lincoln to characterize the growth response of soybean and common ragweed with different irrigation levels and intraspecific and interspecific interference. The experiment was arranged in a split-plot design with irrigation level (0, 50%, 100% replacement of simulated evapotranspiration) as the main plot and common ragweed density (0, 2, 6, 12 plants m<sup>-1</sup> row) as the subplot. Crop- and weed-free controls and three mixture treatments were included as subplots. Periodic destructive samples of leaf area and biomass of different organ groups were collected, and leaf area index (LAI), aboveground biomass partitioning, specific leaf area (SLA), and leaf area ratio (LAR) were calculated. Additionally, soybean and common ragweed yield were harvested, and 100-seed weight and seed production were determined. Soybean did not alter biomass partitioning, SLA, or LAR in mixture with common ragweed. Soybean LAI, biomass, and seed size were affected by increasing common ragweed density. Conversely, common ragweed partitioned less new biomass to leaves and increased SLA in response to increased interference. Common ragweed LAI, biomass, and seed number were reduced by the presence of soybean and increasing common ragweed density; however, seed weight was not affected. Results show that adjustment in biomass partitioning, SLA, and LAR is not the method that soybean uses to remain plastic under competition for light. Common ragweed demonstrated plasticity in both biomass partitioning and SLA, indicating an ability to maintain productivity under intra- and inter-specific competition for light or soil resources.

**Introduction**

The outcome of crop–weed competition depends on the relative abilities of the crop and weed to obtain limited resources or tolerate a resource deficit (Patterson 1995). Light is the only environmental resource for which there is no soil, atmosphere, or plant reservoir (Patterson 1995). Competition for light is driven by total leaf area and vertical distribution and orientation of those leaves in the canopy (Kropff and van Laar 1993). Many plants maintain a higher leaf area ratio (LAR) in the absence of competition, allowing them to better compete for light when competition exists (Anten 2005). Partitioning of new biomass to leaves and stems is an important determinant of total leaf area, leaf display, and LAR. Plants can respond to environmental variation by altering the partitioning of new biomass among plant organs to maximize resource capture and growth (Bloom et al. 1985). Increased organ growth can be obtained through increases in size or number of components such as leaves or branches (Bradshaw 1965).

Soybean plasticity to seeding rate (Board 2000; Elmore 1998; Vega et al. 2000; Vega and Sadras 2003), row spacing (Elmore 1998; Knezevic et al. 2003), and variability in seedling emergence (Andrade and Abbate 2005; Egli 1993) have been demonstrated and attributed to soybean's indeterminate growth habit and prolific branching ability (Kasperbauer 1987). Soybean specific leaf weight has been shown to increase with light intensity (Bowes et al. 1972). When soybean was shaded to levels similar to those encountered when in competition with common cocklebur (*Xanthium strumarium* var. *pensylvanicum*), velvetleaf (*Abutilon theophrasti* Medik.), and jimsonweed (*Datura stramonium* L.), similar yield loss occurred, indicating that light from weed shading was the primary limiting resource (Stoller and Woolley 1985). Drought during soybean reproduction resulted in decreased leaf area index (LAI) and vegetative biomass, and increased

seed size, which compensated for fewer total reproductive structures per unit area (Andriani et al. 1991).

Common ragweed is a monoecious, annual weed in the Asteraceae family known for its early spring emergence and late-season seed production (Bassett and Crompton 1975). Its greatest growth has been reported to occur in July and August in Ottawa, Canada (Bassett and Crompton 1975). Dickerson and Sweet (1971) reported that noncompeting plants emerging after July 8 produced an average of 3,135 seeds per plant, whereas one early-emerging plant produced 62,000 seeds. Common ragweed can grow to over 2 m in height under intraspecific competition (Clewis et al. 2001), suggesting that biomass partitioning has a plastic response to the presence of other plants.

Studies have reported that common ragweed interference can result in substantial yield loss (Barnes et al. 2018; Coble et al. 1981; Cowbrough et al. 2003; Shurtleff and Coble 1985; Weaver 2001). However, little is known about the growth response of soybean to common ragweed competition for light or soil water. Common ragweed has been shown to increase shoot biomass allocation with increasing intraspecific competition (Leskovšek et al. 2012a). Patracchini et al. (2011) determined that common ragweed in monoculture produced less LAI and biomass per plant but more per unit area with increasing density. Common ragweed in monoculture produced fewer seeds per plant as intraspecific competition increased (Leskovšek et al. 2012b). McConnaughay and Coleman (1999) reported no plastic response to extreme changes in water availability in velvetleaf, common lambsquarters (*Chenopodium album* L.), and Pennsylvania smartweed [*Persicaria pensylvanica* (L.) M. Gómez].

To improve our understanding of crop–weed competitive relationships, it is necessary to understand weed adaptive responses to unfavorable conditions (Brainard et al. 2005). The effect of varying levels of available soil water on common ragweed competition and soybean in monoculture and mixture has not been determined. We hypothesized that soybean and common ragweed would respond to water availability and interference by altering their growth. Although increasing competition is expected to reduce overall growth and yield of soybean and common ragweed, it is expected that both species will alter biomass partitioning or leaf size to increase competitiveness for light and soil water. Therefore, the objective of this study was to characterize the growth response of soybean and common ragweed in mixture and monoculture to varying irrigation levels and increasing common ragweed density.

## Materials and methods

A field experiment was conducted in 2015 and 2016 at the University of Nebraska–Lincoln's Eastern Nebraska Research and Extension Center (ENREC) near Mead, NE (41.1649° N, 96.4234° W). The soil was a Filbert silt loam (fine, smectitic, mesic Vertic Argialbolls; 25.6% clay, 63.6% silt, 10.8% sand) with a pH of 6.8 and 2.7% soil organic carbon. A split-plot experimental design was used with four replications. Non-randomized main-plot irrigation treatments were established to achieve full, half, or zero replacement of evapotranspiration (ET) using recommendations of SoyWater (Specht et al. 2010). Main plots were centered at 2.3, 9.9, and 19 m, respectively, from a solid-set irrigation system (Specht et al. 1986, 2001). Five subplot treatments 3 m wide (four soybean rows spaced 0.76 m apart) by 9 m long were randomized within the main plots and consisted of varying common ragweed densities, including 0 (weed-free), 2, 6, and 12 common ragweed plants  $m^{-1}$  row with soybean and 2 common ragweed plants

$m^{-1}$  row without soybean. These densities were chosen based on previous literature on soybean and common ragweed competition, where similar common ragweed densities resulted in low to high soybean yield loss, indicating a gradient of interspecific competition (Coble et al. 1981; Cowbrough et al. 2003; Weaver 2001).

## Experimental procedures

The field was disked in early spring to prepare a seedbed. Plots were hand-sown by broadcasting common ragweed seed (Roundstone Native Seed LLC, Upton, KY 42784) on April 30, 2015 and April 22, 2016. On May 17, 2015 and May 27, 2016, 50% common ragweed emergence was observed. Rainfall of 11 cm between May 9 and May 12, 2016 resulted in flooding of a portion of the experimental area for several days. Although common ragweed was sown earlier than in 2015, anoxic soil conditions killed emerged and germinating seeds, ultimately delaying 2016 emergence. Glyphosate-resistant soybean was planted at 370,500 seeds  $ha^{-1}$  in 76-cm rows on May 13, 2015 (Pioneer 31T11; DuPont Pioneer, Johnston, IA 50131) and May 19, 2016 (Asgrow 2636; Monsanto, St. Louis, MO 63110). Buffers and borders were maintained weed-free with glyphosate (900 g ae  $ha^{-1}$ ) applications and hand hoeing as needed. Uniform soybean emergence occurred on May 23, 2015 and May 27, 2016. Common ragweed was thinned by hand weeding to evenly spaced target densities restricted within a 15-cm band over the soybean row prior to soybean reaching the V2 growth stage. Hand pulling and hoeing were done to maintain common ragweed densities and remove naturally occurring weeds within the plots. Two irrigation gauges were placed in each main-plot replication. Irrigation was implemented on August 3, 2015 [100%, 3.8cm ( $\pm 0.12$ ); 50%, 1.6cm ( $\pm 0.09$ )], July 25, 2016 [100%, 3.8cm ( $\pm 0.18$ ); 50%, 1.4cm ( $\pm 0.16$ )], and August 09, 2016 [100%, 0.7cm ( $\pm 0.05$ ); 50%, 0.4cm ( $\pm 0.04$ )].

## Data collection

Volumetric soil water content was measured weekly from each 0 (soybean monoculture) and 6 common ragweed plants  $m^{-1}$  row subplot using a PR2 soil moisture probe (Dynamax Inc., Houston, TX 77099). Destructive samples of soybean and common ragweed were taken in all subplots at the soybean V3, R1, R4, and R6 growth stages. Destructive samples were taken by counting and clipping plants at the soil surface from a 1-m row sample at least 0.5 m from the edge of each subplot. In 2015, soybean plants were separated into stem, petiole, leaf, and reproductive tissue groups, and ragweed plants were separated into stem and leaf tissue groups for the entire 1-m sample. Soybean leaves were clipped at the base of the lamina separating each trifoliate leaflet. Soybean petioles were removed from the soybean stem, with the bud remaining with the petiole. Common ragweed petioles remained with the stem, and leaves were clipped at the base of the lamina. Soybean flowers and pods were removed to obtain reproductive tissue mass. Leaf area was measured on a LAI 3100 leaf area meter (LI-COR, Lincoln, NE 68504) on all plants in the entire 1 m of the V3 and R1 samples, whereas the R4 and R6 leaf area measurements were obtained from four randomly selected soybean and two ragweed plants within the 1-m sample. As a result of sample loss, biomass was not obtained from any plots and leaf area was not measured from the 50% irrigation main plots during the R6 destructive sample in 2015. In 2016, four random soybean plants and two randomly selected ragweed plants from the respective 1-m samples were separated into stem, petiole, leaf, and reproductive tissue groups as described above and used to scale the entire sample. Tissue samples were dried in paper bags at 65 C for 10 d,

weighed, and summed to determine total aboveground biomass. Plant stem height was measured from two plants per plot at soybean R5 stage from the base of the stem to highest stem bud. To obtain common ragweed seed production, two randomly selected plants were harvested in the second week of October from the center two rows of each subplot, clipped at the soil surface, and dried to a constant weight; the seeds were then counted and the 100-seed weight determined from four random subsamples of 100 seeds. Soybean yield was obtained by harvesting 6.1 m of row using a plot combine and correcting grain mass ( $\text{kg ha}^{-1}$ ) to 13% moisture content (Barnes et al. 2018). Soybean grain was dried at 65 C for 30 d and 100-seed weight determined. Final common ragweed density was obtained by counting the number of plants within the harvest area prior to soybean harvest.

Soybean and common ragweed partitioning coefficients (PCs; %) were calculated for the first three harvest intervals in 2015 and for all four harvest intervals in 2016 using Equation 1 (Knezevic et al. 2001):

$$PC_{(\text{stem, leaf, reproductive})} = \Delta W_{(\text{stem, leaf, reproductive})} / \Delta W_{(\text{whole plant})} \quad [1]$$

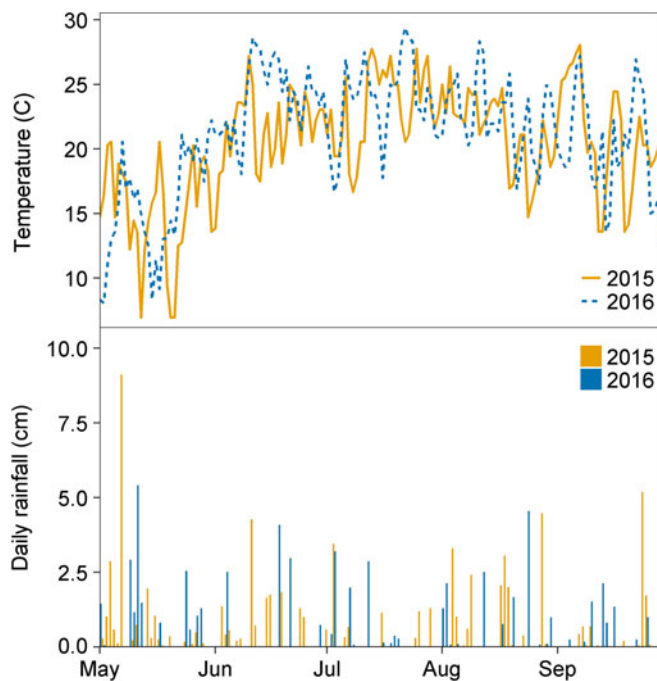
where  $PC_{(\text{stem, leaf, reproductive})}$  is the partitioning coefficient of stem, leaf, or reproductive tissue of soybean or common ragweed;  $\Delta W_{(\text{stem, leaf, reproductive})}$  is the change in dry biomass of the stem, leaf, or reproductive tissue of soybean or common ragweed from the previous destructive sample; and  $\Delta W_{(\text{whole plant})}$  is the change in dry biomass of total aboveground biomass of soybean or common ragweed from the previous destructive sample. Soybean and common ragweed specific leaf area (SLA;  $\text{cm}^2 \text{g}^{-1}$ ) was calculated by dividing the leaf area by the leaf dry mass (Brainard et al. 2005). Soybean and common ragweed LAR ( $\text{cm}^2 \text{g}^{-1}$ ) were calculated by dividing the leaf area by the total aboveground dry mass (Hunt 1982). Leaf area data from the four destructive samples were converted to leaf area index (LAI;  $\text{m}^2 \text{m}^{-2}$ ) based on the area of the sample and the final soybean or common ragweed density. Soybean  $PC_{\text{leaf}}$  included the weight of the petiole, whereas soybean SLA, LAR, and LAI were calculated using only laminae. Daily maximum and minimum temperatures were acquired from the nearest High Plains Regional Climate Center (HPRCC) station approximately 5 km from the experimental field ( $41.14306^\circ \text{N}$ ,  $-96.48083^\circ \text{W}$ ). Temperatures were separately converted to cumulative growing degree days (GDDs) after emergence for soybean and common ragweed using Equation 2 (Gilmore and Rogers 1958):

$$\text{GDD} = \sum ((\{T_{\text{max}} + T_{\text{min}}\} / 2) - T_{\text{base}}) \quad [2]$$

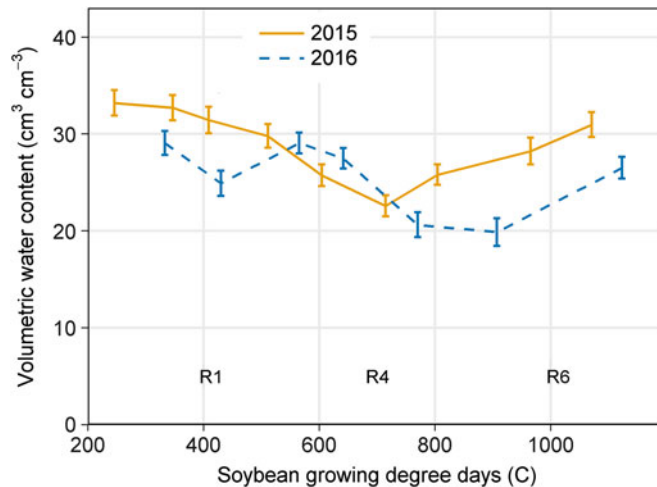
where  $T_{\text{max}}$  and  $T_{\text{min}}$  are the daily maximum and minimum air temperatures (C), respectively, and  $T_{\text{base}}$  is the base temperature. A  $T_{\text{base}}$  of 10 C was selected based on the minimum germination temperatures for common ragweed (Brandes and Nitzsche 2006, Leskovšek et al. 2012a, 2012b) and soybean (Akyuz et al. 2017; Major et al. 1975). Partitioning coefficients are plotted as a function of GDDs accumulated since soybean emergence, where the GDD at a specific time is calculated as  $\text{GDD}_t - (\text{GDD}_t - \text{GDD}_{t-1}) / 2$ .

### Statistical analysis

Effects of year, irrigation, and density treatments, and their interactions on soybean and common ragweed PCs, total aboveground biomass ( $\text{g m}^{-2}$ ), SLA, and LAI were subjected to ANOVA in R version 3.3.2 (R Core Team 2016) using the *ssp.plot* (split-split plot) function in the *agricolae* package (de Mendiburu



**Figure 1.** (A) Average daily air temperature ( $^{\circ}\text{C}$ ) and (B) total daily rainfall (cm) obtained from the nearest High Plains Regional Climate Center in a field experiment conducted in 2015 and 2016 at the University of Nebraska–Lincoln’s Eastern Nebraska Research and Extension Center (ENREC).



**Figure 2.** Volumetric water content ( $\text{cm}^3 \text{cm}^{-3}$ ) collected throughout the growing season (R1, beginning bloom; R4, full pod; R6, full seed) at 30 cm depth in a field experiment conducted in 2015 and 2016 at the University of Nebraska–Lincoln’s Eastern Nebraska Research and Extension Center (ENREC).

2016). Replacement ET level was treated as the main plot, and common ragweed density as the subplot. The stages at which sampling occurred were treated as pseudo-replications within subplots (sub-subplot). Soybean and common ragweed 100-seed weight and common ragweed seeds per plant were analyzed as above but without sampling stage as a variable. For all ANOVA tests, replication nested within year was treated as a random effect. If year-by-treatment interactions were significant, data were analyzed separately among years. Tukey’s least significant difference was used to

**Table 1.** ANOVA for soybean partitioning coefficients, specific leaf area, leaf area ratio, leaf area index, aboveground biomass, height, and 100-seed weight in a field experiment conducted in 2015 and 2016 at the University of Nebraska–Lincoln's Eastern Nebraska Research and Extension Center (ENREC) near Mead, NE.<sup>a,b</sup>

	$PC_{\text{leaf}}$	$PC_{\text{stem}}$	$PC_{\text{repro}}$	SLA	LAR	LAI	Aboveground biomass	Height	100-seed wt
	% Change in total biomass			$\text{cm}^2 \text{g}^{-1}$	$\text{cm}^2 \text{g}^{-1}$	$\text{m}^2 \text{m}^{-2}$	$\text{cm}^2 \text{g}^{-2}$	cm	g
Replacement ET level (irrigation treatment)	0.0743 NS	0.2363 NS	0.3762 NS	0.1324 NS	0.1471 NS	0.0989 NS	0.0551 NS	0.1309 NS	0.8151 NS
Common ragweed density	0.9401 NS	0.9521 NS	0.9770 NS	0.6120 NS	0.0679 NS	<0.0001 ***	<0.0001 ***	0.2763 NS	<0.0001 ***
Destructive sampling stage	<0.0001 ***	<0.0001 ***	<0.0001 ***	<0.0001 ***	<0.0001 ***	<0.0001 ***	<0.0001 ***	NA	NA
Level × density	0.5701 NS	0.8753 NS	0.2799 NS	0.8453 NS	0.8210 NS	0.4591 NS	0.6692 NS	0.6347 NS	0.4055 NS
Level × sample	0.0830 NS	0.0544 NS	0.0771 NS	0.8834 NS	0.9941 NS	0.5356 NS	0.0615 NS	NA	NA
Density × sample	0.5236 NS	0.2577 NS	0.9538 NS	0.5726 NS	0.5185 NS	<0.0001 ***	<0.0001 ***	NA	NA
Level × density × sample	0.3071 NS	0.3914 NS	0.6327 NS	0.7214 NS	0.9262 NS	0.9983 NS	0.2794 NS	NA	NA

<sup>a</sup>Abbreviations: ET, evapotranspiration; LAI, leaf area index; LAR, leaf area ratio;  $PC$ , aboveground biomass partitioning coefficient of leaf, stem, or reproductive tissues; SLA, specific leaf area.

<sup>b</sup>Significance levels: NS, nonsignificant at  $\alpha = 0.05$ ; \* $P \leq 0.05$ ; \*\* $P \leq 0.01$ ; \*\*\* $P \leq 0.001$ .

separate means at  $\alpha = 0.05$ . Contrast analyses were performed to better assess differences between monoculture and mixture subplots.

## Results and discussion

Temperature and rainfall in 2015 and 2016 were similar (Figure 1), and most of the available soil water lost through ET was replenished by rainfall. As a result of ample rainfall and adequate soil water content, irrigation was only triggered once in 2015 and twice in 2016. Volumetric water content at the 30-cm depth remained between 20% and 35% throughout most of the soybean reproductive stages in 2015 and 2016 (Figure 2) and was often greater at deeper soil depths (30 to 100 cm; data not shown). Therefore, substantial impacts of irrigation treatments on soybean or common ragweed growth and their interference are not expected. Year-by-treatment interactions for all variables were nonsignificant; therefore, data were combined across years.

### Biomass partitioning

Soybean aboveground biomass partitioning to leaves, stems, and reproductive tissues was not affected by irrigation treatment or common ragweed density but did change throughout the season (Table 1). Seventy-five percent of new soybean biomass was partitioned to leaves from emergence to V3 (163 GDD) and decreased nearly linearly to 0.05 between the R4 to R6 stages (1,013 GDD) (Figure 3A). Soybean biomass partitioning to stems increased linearly from 0.25 from emergence to V3 (163 GDD) to 0.42 during R1 to R4 (701 GDD), then declined to 0.10 between the R4 and R6 stages (1,013 GDD; Figure 3A). As expected, biomass partitioning to reproductive tissue increased at an increasing rate from 0.02 during V3 to R1 (413 GDD) to 0.85 between R4 and R6 (1,013 GDD; Figure 3A). Soybean did not partition new aboveground biomass to stems or leaves differently with or without common ragweed present.

Common ragweed destructive samples were separated only into leaves and stems. Therefore, the sum of  $PC_{\text{leaf}}$  and  $PC_{\text{stem}}$  will always add to 1.0, and their errors are identical. The fraction of

new biomass partitioned to leaves declined, whereas that to stems increased throughout the growing season in all treatments, similar to the results of Leskovšek et al. (2012a) (Figure 3B). Ragweed biomass partitioning was affected by an interaction between common ragweed density and sampling stage (Table 2). In competition with soybean, common ragweed partitioned less to leaves and more to stems with increasing common ragweed density (Figure 3B). In monoculture, common ragweed partitioned more to leaves than all mixture densities throughout most of the growing season. However, late in the growing season (1,023 GDD), common ragweed in monoculture partitioned 6% less biomass to leaves than 2 common ragweed plants  $\text{m}^{-1}$  row in mixture (Figure 3B).

### Specific leaf area

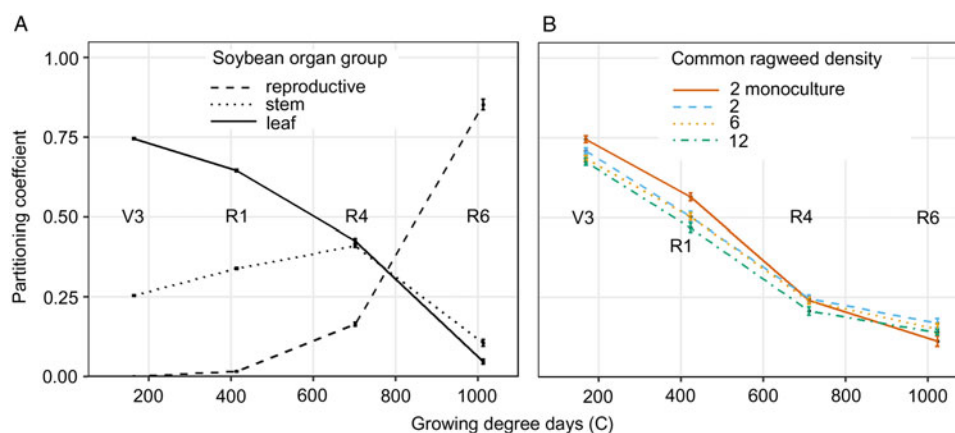
Soybean SLA ( $\text{cm}^2 \text{g}^{-1}$ ) varied by sampling stage but was not affected by irrigation treatment or common ragweed density (Table 1). This indicates that soybean did not compensate for common ragweed interference by adjusting SLA (Figure 4A). Lugg and Sinclair (1979) reported that soybean SLA increased until the R1 stage and then decreased steadily until mid-pod-fill (R5 to R6), but also varied among soybean cultivars. The SLA values calculated for soybean in this study are within the range reported in the literature (Junior and Kawakami 2013; Lugg and Sinclair 1979; Patterson and Flint 1983; Thompson et al. 1995). Soybean did not compensate for interplant competition by altering its biomass partitioning or adjusting its SLA (i.e., leaf thickness), indicating that these are not ways in which soybean adjusts for interplant competition for light.

Common ragweed was affected by an interaction between common ragweed density and sampling stage (Table 2). However, contrast analysis allowed us to determine that common ragweed SLA was affected by soybean presence or absence across sampling stages, but not by common ragweed density in mixture with soybean (Figure 4B). Common ragweed had lower SLA than soybean at all sampling stages, indicating that its leaves are thicker than that of soybean. In monoculture, common ragweed showed a similar trend in SLA to that of soybean throughout the growing season. Common

**Table 2.** ANOVA table for common ragweed partitioning coefficients, specific leaf area, leaf area ratio, leaf area index, aboveground biomass, height, 100-seed weight, and seed number in a field experiment conducted in 2015 and 2016 at the University of Nebraska–Lincoln’s Eastern Nebraska Research and Extension Center (ENREC) near Mead, NE<sup>a,b</sup>

	$PC_{\text{leaf}}$	$PC_{\text{stem}}$	SLA	LAR	LAI	Aboveground biomass	Height	100-seed weight	Seed number
	% of total biomass change		$\text{cm}^2 \text{g}^{-1}$	$\text{cm}^2 \text{g}^{-1}$	$\text{cm}^2 \text{g}^{-2}$	$\text{g m}^{-1} \text{row}$	cm	g	
Replacement ET level (irrigation treatment)	0.8834 NS	0.8834 NS	0.1168 NS	0.4645 NS	0.1853 NS	0.1260 NS	0.3107 NS	0.1285 NS	0.0910 NS
Common ragweed density	0.0004 ***	0.0004 ***	0.2163 NS	0.0372 *	<0.0001 ***	<0.0001 ***	0.0084 **	0.6488 NS	0.0041 **
Destructive sampling stage	<0.0001 ***	<0.0001 ***	<0.0001 ***	<0.0001 ***	<0.0001 ***	<0.0001 ***	NA	NA	NA
Level × density	0.4556 NS	0.4556 NS	0.8783 NS	0.4557 NS	0.7722 NS	0.5597 NS	0.8443 NS	0.5991 NS	0.1105 NS
Level × sample	0.1957 NS	0.1957 NS	0.7682 NS	0.9302 NS	0.3151 NS	0.3207 NS	NA	NA	NA
Density × sample	0.0012 **	0.0012 **	0.0001 ***	0.0299 *	<0.0001 ***	<0.0001 ***	NA	NA	NA
Level × density × sample	0.3790 NS	0.3790 NS	0.9120 NS	0.8965 NS	0.9994 NS	0.0850 NS	NA	NA	NA

<sup>a</sup>Abbreviations: ET, evapotranspiration; LAI, leaf area index; LAR, leaf area ratio;  $PC$ , aboveground biomass partitioning coefficient of leaf, stem, or reproductive tissues; SLA, specific leaf area.  
<sup>b</sup>Significance levels: NS, nonsignificant at  $\alpha = 0.05$ ; \* $P \leq 0.05$ ; \*\* $P \leq 0.01$ ; \*\*\* $P \leq 0.001$ .



**Figure 3.** (A) Soybean partitioning coefficient of reproductive, stem, and leaf throughout the growing season in combined monoculture and mixture with common ragweed treatments at the V3 (third trifoliate), R1 (beginning bloom), R4 (full pod), and R6 (full seed) soybean growth stage. (B) Common ragweed partitioning coefficient of leaf throughout the growing season in monoculture (2 plants  $\text{m}^{-1}$  row) and in mixture (2, 6, and 12 plants  $\text{m}^{-1}$  row) with soybean in a field experiment conducted in 2015 and 2016 at the University of Nebraska–Lincoln’s Eastern Nebraska Research and Extension Center (ENREC).

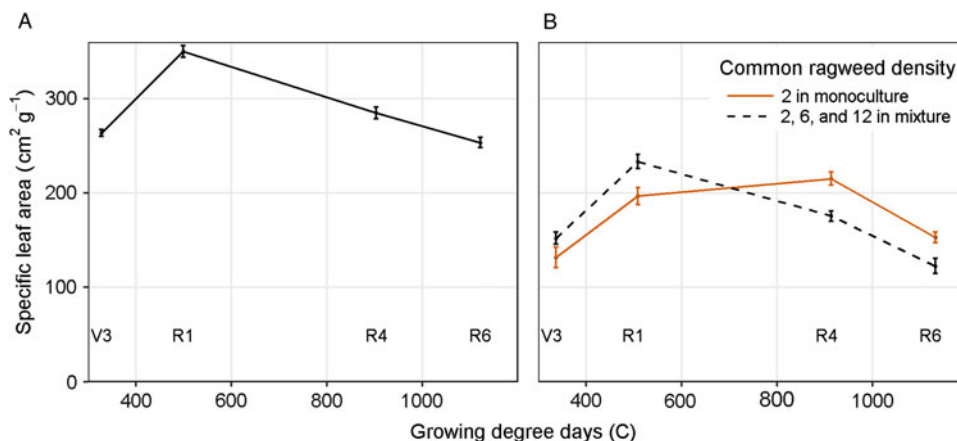
ragweed growing in mixture with soybean had greater SLA than that in monoculture during vegetative growth, but then became smaller later in the season. Therefore, common ragweed leaves in mixture with soybean were thinner early in the season but thicker late in the season. Patracchini et al. (2011) observed similar values of common ragweed SLA and found no differences in SLA between monoculture densities ranging from 4 to 24 plants  $\text{m}^{-2}$  throughout the growing season. When common ragweed was grown in mixture with soybean, it reduced biomass partitioning to leaves in favor of stem growth but also compensated by increasing SLA (i.e., thinner leaves) to maintain leaf area, but only through the R1 sampling stage.

### Leaf area ratio

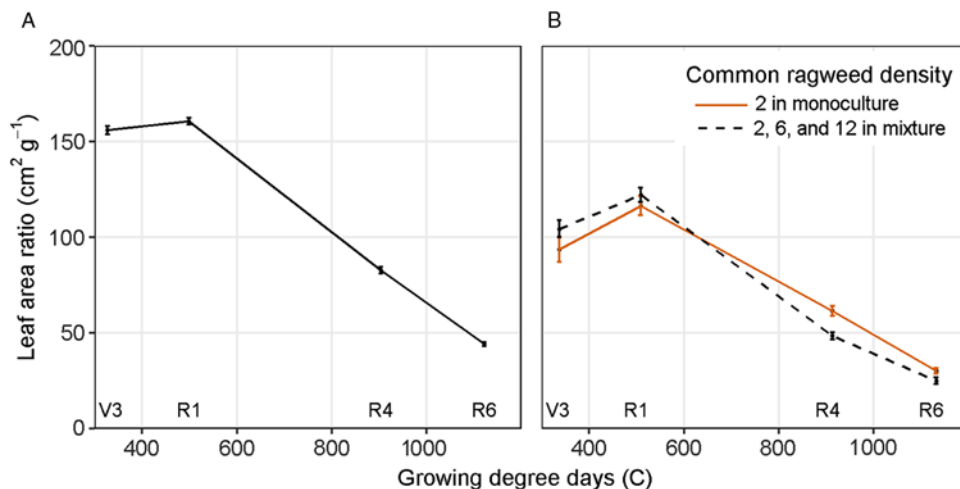
Soybean LAR was affected by sampling stage but not by mixture or irrigation treatments (Table 1). Throughout vegetative stages,

soybean maintained a high LAR followed by a steady decline during reproductive stages (Figure 5A), much like the trend in biomass partitioning to leaves (Figure 3A) and SLA (Figure 4A).

Common ragweed LAR was affected by an interaction between density treatment and sampling stage (Table 2). However, contrast analysis allowed us to determine that common ragweed LAR was affected by soybean presence or absence across sampling stages, but not by common ragweed density in mixture with soybean (Figure 5B). Much like common ragweed’s response observed with SLA (Figure 4B), common ragweed in monoculture maintained a lower LAR early in the season and a greater LAR later in the season than common ragweed in mixture (Figure 5B). As previously discussed, common ragweed in monoculture partitioned more to leaf biomass early in the season and less late in the season than common ragweed in mixture (Figure 3B). However, the biomass partitioned to monoculture leaves early in



**Figure 4.** (A) Specific leaf area of soybean at V3 (third trifoliolate), R1 (beginning bloom), R4 (full pod), and R6 (full seed) in combined monoculture and mixture with common ragweed treatments and (B) specific leaf area of common ragweed in monoculture (2 plants  $\text{m}^{-1}$  row) and in mixture (2, 6, and 12 plants  $\text{m}^{-1}$  row) with soybean throughout the growing season in a field experiment conducted in 2015 and 2016 at the University of Nebraska–Lincoln’s Eastern Nebraska Research and Extension Center (ENREC).



**Figure 5.** (A) Leaf area ratio of soybean at V3 (third trifoliolate), R1 (beginning bloom), R4 (full pod), and R6 (full seed) in combined monoculture and mixture with common ragweed treatments. (B) Leaf area ratio of common ragweed in monoculture (2 plants  $\text{m}^{-1}$  row) and in mixture (2, 6, and 12 plants  $\text{m}^{-1}$  row) with soybean throughout the growing season in a field experiment conducted in 2015 and 2016 at the University of Nebraska–Lincoln’s Eastern Nebraska Research and Extension Center (ENREC).

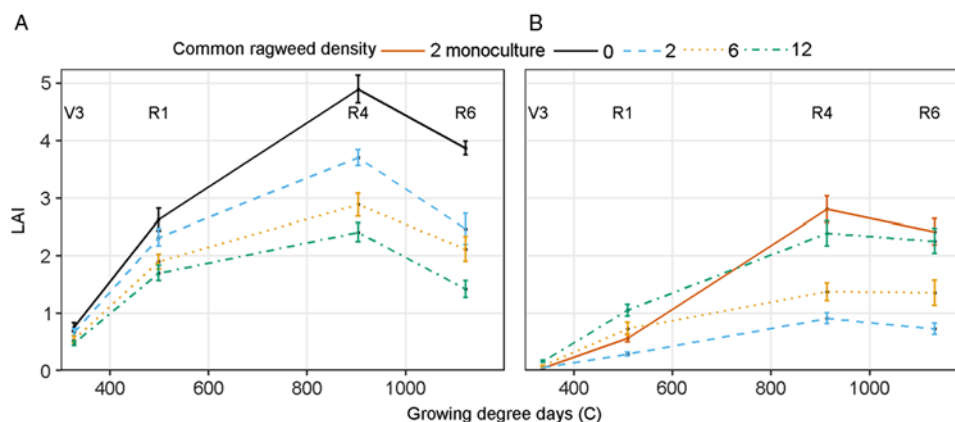
the season was utilized to produce thicker leaves with lower SLA and, conversely, later in the season compared to common ragweed in mixture with soybean.

#### Leaf area index

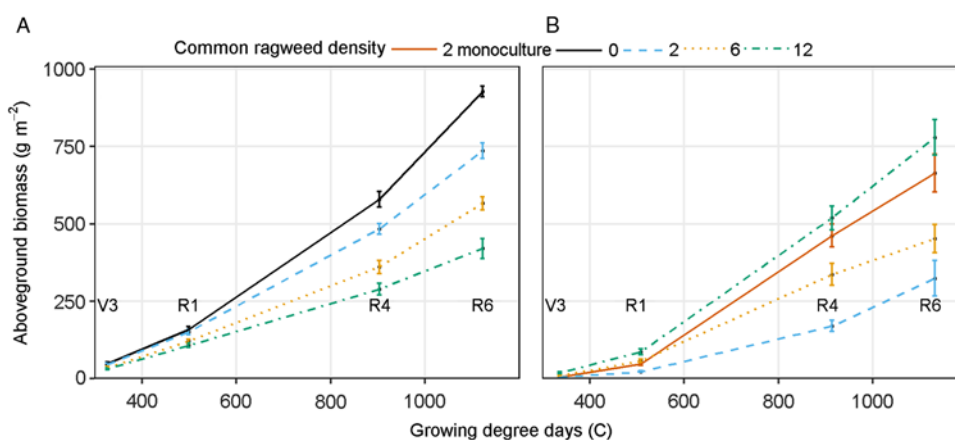
A significant interaction between common ragweed density and sampling stage occurred for soybean LAI (Table 1). Soybean LAI was always greatest in the weed-free control and declined with increasing common ragweed density (Figure 6A). Soybean leaf senescence affected LAI after the R4 stage, similar to results reported in the literature (Setiyono et al. 2008). Rate of soybean leaf senescence was not influenced by common ragweed density (Figure 6A). Hagood et al. (1980) reported that 10 and 20 velvetleaf plants  $\text{m}^{-2}$  reduced soybean LAI by 38% and 47%, respectively, during mid-reproductive stages, whereas in our study common ragweed interference reduced soybean LAI by as much as 80% and 40% at R4 in 2015 and 2016, respectively. The decline in

soybean LAI with increasing common ragweed density must be associated with a reduction in soybean growth, as soybean did not change its biomass partitioning or SLA to compensate for lower light availability as ragweed density increased.

An interaction between sampling stage and common ragweed density affected common ragweed LAI (Table 2). Common ragweed LAI increased nearly linearly until the soybean R4 stage then declined as a result of leaf senescence (Figure 6B). Common ragweed LAI in mixture with soybean increased with increasing common ragweed density at all sampling times (Figure 6B). In the absence of soybean interference, common ragweed LAI was similar to its equivalent density in mixture (2 plants  $\text{m}^{-1}$  row) at the V3 sampling time but was subsequently much greater, ultimately reaching a similar LAI to that in the 12 plants  $\text{m}^{-1}$  row mixture treatment (Figure 6B). This suggests that the presence of soybean limited common ragweed leaf area growth, especially at lower densities. The greatest common ragweed LAI was achieved at the R4 soybean sampling stage in the monoculture of 2 plants



**Figure 6.** (A) Soybean leaf area index (LAI) at V3 (third trifoliolate), R1 (beginning bloom), R4 (full pod), and R6 (full seed). (B) Common ragweed LAI as affected by common ragweed densities of 0, 2, 6, and 12 plants  $m^{-2}$  row throughout the growing season in a field experiment conducted in 2015 and 2016 at the University of Nebraska–Lincoln’s Eastern Nebraska Research and Extension Center (ENREC).



**Figure 7.** (A) Soybean aboveground biomass at V3 (third trifoliolate), R1 (beginning bloom), R4 (full pod), and R6 (full seed). (B) Common ragweed aboveground biomass as affected by common ragweed densities of 0, 2, 6, and 12 plants  $m^{-2}$  row throughout the growing season in a field experiment conducted in 2015 and 2016 at the University of Nebraska–Lincoln’s Eastern Nebraska Research and Extension Center (ENREC).

$m^{-1}$  row—a result that can be partially attributed to the increase in biomass partitioning to leaves, the increased SLA, and the greater LAR observed in the monoculture at that sampling stage compared to the mixture treatments (Figure 3B).

### Aboveground biomass

An interaction between common ragweed density and sampling stage occurred for soybean total aboveground biomass (Table 1). Soybean aboveground biomass increased as the season progressed and declined with increasing common ragweed density (Figure 7A). These differences were seen as early as the V3 stage of development, with the highest common ragweed density (12 plants  $m^{-1}$  row) producing 24% less biomass than the weed-free treatment, indicating that common ragweed interference may reduce soybean growth very early in the season (Figure 7A). These differences became greater as the season progressed, with as much as 66% reduction in aboveground biomass in the 12 plants  $m^{-1}$  row treatment compared to the weed-free control at R4. Gustafson et al. (2006) reported season-long interference from a mixture of weed species resulted in 26% to 86% reduction compared to weed-free. Velvetleaf interference reduced soybean biomass beginning early

in the season and extending throughout the entire season, suggesting that even early-season weed interference can reduce soybean biomass (Hagood et al. 1980). These differences can be partially attributed to the lack of plasticity in soybean biomass partitioning, SLA, and LAR observed in this study.

Common ragweed aboveground biomass was affected by an interaction between sampling stage and common ragweed density (Table 2). Common ragweed in monoculture (2 plants  $m^{-1}$  row) produced up to 271% greater biomass than the 2 plants  $m^{-1}$  row in mixture with soybean, indicating that soybean greatly reduced common ragweed aboveground biomass (Figure 7B). With soybean interference, common ragweed biomass was smallest with the 2 plants  $m^{-1}$  row and increased with common ragweed density, regardless of when it was sampled. Differences were small at V3 sampling stage but became progressively greater as the season progressed. The biomass produced by the highest common ragweed density at R6 was 383% larger than that of the lowest density. Patracchini et al. (2011) reported that higher common ragweed density resulted in greater aboveground biomass per unit area but less biomass per plant. Leskovšek et al. (2012b) reported greater biomass per plant in 1.3 plants  $m^{-2}$  density compared with 6.6 plants  $m^{-2}$  density. Common ragweed

aboveground biomass followed a similar trend to its LAI accumulation throughout the season prior to leaf senescence within the mixture treatments. Monoculture-grown common ragweed had the greatest LAI compared to all mixture treatments late in the season, but aboveground biomass was not greatest in this treatment. Common ragweed plasticity in biomass partitioning, SLA, and LAR later in the growing season allowed for greater SLA and the greatest biomass partitioning to leaves in monoculture, resulting in greater LAR and LAI compared to all other mixture densities, even when aboveground biomass of the monoculture was not the greatest. This ability to adjust biomass partitioning, SLA, and LAR is a clear competitive advantage for common ragweed.

### Stem height

Soybean height measured at R5 was not affected (Table 1). Soybean stem height averaged 96.5 cm across all treatments. The lack of difference in late-season soybean stem height is a result of no difference in soybean biomass partitioning to stems observed throughout the growing season (Figure 3A). This indicates that soybean was unable to adjust to the presence of common ragweed by increasing its stem height.

Common ragweed stem height measured at the soybean R5 stage was not affected by irrigation treatment but was affected by common ragweed density (Table 2). Ragweed densities of 2 plants  $m^{-1}$  row in monoculture and 2, 6, and 12 plants  $m^{-1}$  row in mixture resulted in ragweed heights of 121.0 ( $\pm$  2.9), 127.1 ( $\pm$  2.5), 134.2 ( $\pm$  1.8), and 132.5 ( $\pm$  1.7) cm, respectively. This indicates that common ragweed increased its height with greater ragweed densities, with 6 and 12 plants  $m^{-1}$  row resulting in taller plants than 2 plants  $m^{-1}$  row. Additionally, 2 plants  $m^{-1}$  row in monoculture resulted in shorter plants than 2 plants  $m^{-1}$  row in mixture. This supports the increase in biomass partitioning to stems observed in common ragweed in mixture compared to monoculture and with increasing common ragweed density in mixture (Figure 3B). The increase in common ragweed biomass partitioning to stems under increasing competition (Figure 3B) indicates that ragweed is able to increase in height to avoid soybean interference. This plastic response to changing density allows ragweed to be more competitive for light.

### Seed size and number

Soybean 100-seed weight was not affected by irrigation treatment but was affected by common ragweed density (Table 1). Common ragweed densities of 0, 2, 6, and 12 plants  $m^{-1}$  row resulted in soybean 100-seed weights of 14.6 ( $\pm$  0.09), 12.2 ( $\pm$  0.19), 10.5 ( $\pm$  0.28), and 9.3 ( $\pm$  0.29) g 100 seed $^{-1}$ , respectively. Each treatment of increasing ragweed density resulted in decreased seed weight, with 12 plants  $m^{-1}$  resulting in a 36% reduction in seed weight. Eaton et al. (1973) reported that soybean 100-seed weight was reduced 11% with 90 d of Venice mallow (*Hibiscus trionum* L.) competition compared to weed-free soybean. Wyse et al. (1986) reported a 12% reduction in 100-seed weight by 4 Jerusalem artichoke (*Helianthus tuberosus* L.)  $m^{-1}$  row.

Common ragweed 100-seed weight was not affected, with mean 100-seed weight of 0.31 g (Table 2). Palmblad (1968) reported constant seed weight produced from densities ranging from 55 to 11,000 plants  $m^{-2}$  for smooth brome (*Bromus inermis* Leyss.), shepherd's purse (*Capsella bursa-pastoris* L.), horseweed (*Coryza canadensis* L. Cronq.), buckhorn plantain (*Plantago lanceolata* L.), broadleaf plantain (*Plantago major* L.), woodland groundsel (*Senecio sylvaticus* L.), sticky groundsel (*Senecio*

*viscosus* L.), and common catchfly (*Silene gallica* L.). Downy brome (*Bromus tectorum* L.) seed size declined with increased density (Palmblad 1968). Increasing common ragweed density reduced the number of common ragweed seeds per plant (Table 2). Irrigation treatment did not affect seeds per plant. The 2 plants  $m^{-1}$  row density in monoculture and mixture had the greatest seed production of 6,010 seeds plant $^{-1}$ . In mixture with soybean, 6 and 12 plants  $m^{-1}$  row resulted in 3,180 and 2,590 seeds plant $^{-1}$ . Leskovešek et al. (2012b) reported decreasing common ragweed seed number per plant with increasing intraspecific competition.

Results indicate that soybean's adjustment in biomass partitioning, SLA, and LAR is not the method that soybean uses to remain plastic under interspecific competition for light. Although there was no competition for soil water throughout the experiment, no belowground biomass was measured. These results suggest that one of the benefits of common ragweed's plasticity is its resilience to competition, which resulted in stable seed size, unlike soybean, which reacted to increasing competition with reduced seed size.

**Author ORCIDs.** Ethann R. Barnes  <https://orcid.org/0000-0002-6697-3839>; Amit J. Jhala  <https://orcid.org/0000-0001-8599-4996>

**Acknowledgments.** No conflicts of interest have been declared. This research received no specific grant from any funding agency, commercial, or not-for-profit sectors. The authors acknowledge Jacob Nikodym and Ian Rogers for their help in this project.

### References

- Akyuz FA, Kandel H, Morlock D (2017) Developing a growing degree day model for North Dakota and northern Minnesota soybean. *Agric For Meteorol* 239:134–140
- Andrade FH, Abbate PE (2005) Response of maize and soybean to variability in stand uniformity. *Agron J* 97:1263–1269
- Andriani JM, Andrade FH, Suero EE, Dardanelli JL (1991) Water deficits during reproductive growth of soybeans. I. Their effects of dry matter accumulation, seed yield and its components. *Agronomie, EDP Sciences* 11:737–746
- Anten NPR (2005) Optimal photosynthetic characteristics of individual plants in vegetation stand and implications for species coexistence. *Ann Bot* 95:495–506
- Barnes ER, Jhala AJ, Knezevic SZ, Sikkema PH, Lindquist JL (2018) Common ragweed (*Ambrosia artemisiifolia* L.) interference with soybean in Nebraska. *Agron J* 110:646–653
- Bassett IJ, Crompton CW (1975) The biology of Canadian weeds. 11. *Ambrosia artemisiifolia* L. and *A. pslostachya* DC. *Can J Plant Sci* 55:463–476
- Bloom AJ, Chapin FS, Mooney HA (1985) Resource limitation in plants—an economic analogy. *Annu Rev Ecol Syst* 16:363–392
- Board J (2000) Light interception efficiency and light quality affect yield compensation of soybean at low plant populations. *Crop Sci* 40:1285–1294
- Bowes G, Ogren L, Hageman RH (1972) Light saturation, photosynthesis rate, RuBP carboxylase activity, and specific leaf weight in soybeans grown under different light intensities. *Crop Sci* 12:77–79
- Bradshaw AD (1965) Evolutionary significance of phenotypic plasticity in plants. *Adv Genet* 13:115–155
- Brainard DC, Bellinder RR, DiTommaso A (2005) Effects of canopy shade on the morphology, phenology, and seed characteristics of Powell amaranth (*Amaranthus powellii*). *Weed Sci* 53:175–186
- Brandes D, Nitzsche J (2006) Biology, introduction, dispersal, and distribution of common ragweed (*Ambrosia artemisiifolia* L.) with special regard to Germany. *Nachrichtenbl Deut Pflanzenschutzd* 58:286–291
- Clewis SB, Askew SD, Wilcut JW (2001) Common ragweed interference in peanut. *Weed Sci* 49:768–772
- Coble HD, Williams FM, Ritter RL (1981) Common ragweed (*Ambrosia artemisiifolia*) interference in soybeans (*Glycine max*). *Weed Sci* 29:339–342



- Cowbrough MJ, Brown RB, Tardif FJ (2003) Impact of common ragweed (*Ambrosia artemisiifolia*) aggregation on economic thresholds in soybean. *Weed Sci* 51:947–954
- de Mendiburu F (2016) *Agricolae*: statistical procedures for agricultural research. R package version 1.2-4. <https://CRAN.R-project.org/package=agricolae>. Accessed: January 1, 2017
- Dickerson Jr. CT, Sweet RD (1971) Common ragweed ecotypes. *Weed Sci* 19:64–66
- Eaton BJ, Feltner KC, Russ OG (1973) Venice mallow competition in soybeans. *Weed Sci* 21:89–94
- Egli DB (1993) Relationship of uniformity of soybean seedling emergence to yield. *J Seed Technol* 17:22–28
- Elmore RW (1998) Soybean cultivar response to row spacing and seeding rates in rainfed and irrigated environments. *J Prod Agric* 11:326–331
- Gilmore EC, Rogers JS (1958) Heat units as a method of measuring maturity in corn. *Agron J* 50:611–615
- Gustafson TC, Knezevic SZ, Hunt TE, Lindquist JL (2006) Simulated insect defoliation and duration of weed interference affected soybean growth. *Weed Sci* 54:735–742
- Hagood ES, Bauman TT, Williams Jr. JL, Schreiber MM (1980) Growth analysis of soybeans (*Glycine max*) in competition with velvetleaf (*Abutilon theophrasti*). *Weed Sci* 28:729–734
- Hunt R (1982) *Plant Growth Curves. The Functional Approach to Plant Growth Analysis*. London: Edward Arnold. 260 p
- Junior CP, Kawakami J (2013) Efficiency of leaf disc method for estimating the leaf area index of soybean plants. *Acta Sci Agron* 35. <http://dx.doi.org/10.4025/actasciagron.v35i4.16290>. Accessed: April 15, 2017
- Kasperbauer MJ (1987) Far-red light reflection from green leaves and effects of phytochrome-mediated partitioning under field conditions. *Plant Physiol* 85:350–354
- Knezevic SZ, Evans SP, Mainz M (2003) Row spacing influences the critical timing for weed removal in soybean (*Glycine max*). *Weed Technol* 17:666–673
- Knezevic SZ, Vanderlip RL, Horak MJ (2001) Relative time of redroot pigweed emergence affects dry matter partitioning. *Weed Sci* 49:617–621
- Kropff MJ, van Laar HH, eds. (1993) *Modelling crop-weed interactions*. Wallingford, UK: CABI. Pp. 25–30, 157.
- Leskovšek R, Datta A, Knezevic SZ, Simončič A (2012a) Common ragweed (*Ambrosia artemisiifolia*) dry matter allocation and partitioning under different nitrogen and density levels. *Weed Biol Manag* 12:98–108
- Leskovšek R, Eier K, Batič F, Simončič A (2012b) The influence of nitrogen, water and competition on the vegetative and reproductive growth of common ragweed (*Ambrosia artemisiifolia* L.). *Plant Ecol* 213:769–781
- Lugg DG, Sinclair TR (1979) A survey of soybean cultivars for variability in specific leaf weight. *Crop Sci* 19:887–892
- Major DJ, Johnson DR, Tanner JW, Anderson IC (1975) Effects of daylength and temperature on soybean development. *Crop Sci* 15:174–179
- McConaughay KDM, Coleman JS (1999) Biomass allocation in plants: ontogeny or optimality? A test along three resource gradients. *Ecology* 80:2581–2593
- Palmblad IG (1968) Competition in experimental populations of weeds with emphasis on the regulation of population size. *Ecology* 49:26–34
- Patracchini C, Vidotto F, Ferrero A (2011) Common ragweed (*Ambrosia artemisiifolia*) growth as affected by plant density and clipping. *Weed Technol* 25:268–276
- Patterson DT (1995) Effects of environmental stress on weed/crop interactions. *Weed Sci* 43:483–490
- Patterson DT, Flint EP (1983) Comparative water relations, photosynthesis, and growth of soybean (*Glycine max*) and seven associated weeds. *Weed Sci* 31:318–323
- R Core Team (2016) R: A language and environment for statistical computing. R Foundation for Statistical Computing, Vienna, Austria. <https://www.R-project.org/>. Accessed: January 1, 2017
- Setiyono TD, Weiss A, Specht JE, Cassman KG, Dobermann A (2008) Leaf area index simulation in soybean grown under near-optimal conditions. *Field Crops Res* 108:82–92
- Shurtleff JL, Coble HD (1985) Interference of certain broadleaf weeds species in soybeans (*Glycine max*). *Weed Sci* 33:654–657
- Specht JE, Chase K, Macrander M, Graef GL, Chung J, Markwell JP (2001) Soybean response to water: AQTL analysis of drought tolerance. *Crop Sci* 41:493–509
- Specht JE, Torrier JA, Setiyono TD, Cassman KG, Suat I, Hubbard K, Schulski M, Li J, Sorensen W (2010) Station-specific weather and crop water use: A decision-aid webpage to schedule irrigation in soybeans. Univ. of Nebraska, Lincoln. [http://hprcc-agron0.unl.edu/cornsoywater/public\\_html/Home.php](http://hprcc-agron0.unl.edu/cornsoywater/public_html/Home.php)
- Specht JE, Williams JH, Weidenbenner CJ (1986) Differential responses of soybean genotypes subjected to a seasonal soil water gradient. *Crop Sci* 26:922–934
- Stoller EW, Woolley JT (1985) Competition for light by broadleaf weeds in soybeans (*Glycine max*). *Weed Sci* 33:199–202
- Thompson JA, Nelson RL, Schweitzer LE (1995) Relationships among specific leaf weight, photosynthetic rate, and seed yield in soybean. *Crop Sci* 35:1575–1581
- Vega CR, Sadras VO (2003) Size-dependent growth and the development of inequality in maize, sunflower and soybean. *Ann Bot-London* 91:795–805
- Vega CR, Sadras VO, Andrade FH, Uhart SA (2000) Reproductive allometry in soybean, maize and sunflower. *Ann Bot (London)* 85:461–468
- Weaver SE (2001) Impact of lamb's-quarters, common ragweed and green foxtail on yield of corn and soybean in Ontario. *Can J Plant Sci* 81:821–828
- Wyse DL, Young FL, Jones RJ (1986) Influence of Jerusalem artichoke (*Helianthus tuberosus*) density and duration of interference on soybean (*Glycine max*) growth and yield. *Weed Sci* 34:243–247