

OVERVIEW APPENDIX 3

N2025 Strategic Plan

<https://n2025.unl.edu/downloads/N2025-Strategic-Plan.pdf>

“Where every person and every interaction matters”

The N2025 Strategic Plan outlines the aims, strategies, expectations, and targets for the first five years of the 25-year vision articulated within the N150 Commission Report. The N2025 Strategic Plan contains six ambitious aims. Each aim represents a purpose or intended outcome. Supporting each aim are strategies and expectations. Strategies are actions that can be taken to move toward the aim. Expectations are anticipated changes that will be realized through the implementation of the strategies. Targets are quantifiable metrics that serve as benchmarks to achieve by 2025.

The Aims

The six aims are listed below. The order of the aims does not imply relative priority. The first four aims focus on the university’s mission-centric areas, while the others focus on our people. The interconnected relationship among the aims is depicted in Figure 1. Each of these aims should be read and understood with the concluding phrase “...in a way that every person and every interaction matters.”



Aim: Innovate **student experiences** that prepare graduates to be life-long learners and contributors to the workforce in Nebraska and the world



Aim: Establish a culture at Nebraska committed to increasing the **impact of research and creative activity**



Aim: Focus research, scholarship, creative activity, and student experiences to foster innovative, **interdisciplinary endeavors** and **solve challenges** critical to Nebraska and the world



Aim: Broaden Nebraska’s engagement in community, industry, and global partnerships



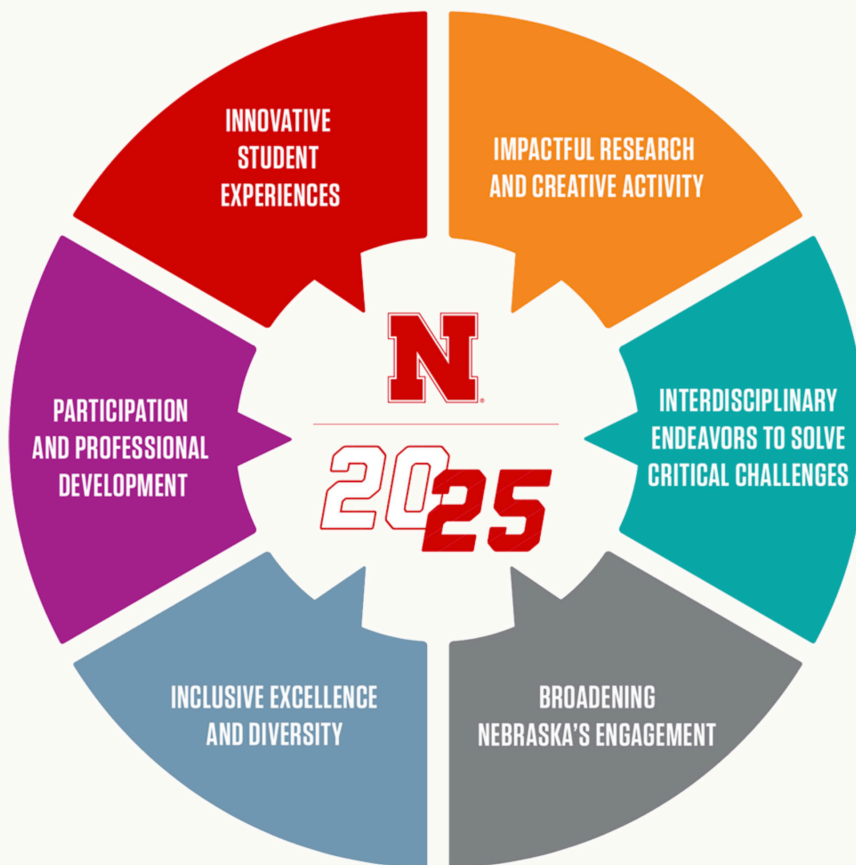
Aim: Create a climate at Nebraska that emphasizes, prioritizes, and expands **inclusive excellence and diversity**



Aim: Prioritize **participation and professional development** for all Nebraska students, staff, and faculty

OVERVIEW APPENDIX 3

N2025 Strategic Plan



RESPONSIBLE STEWARDSHIP OF RESOURCES

To achieve the N2025 aims, the university must commit to responsible stewardship of resources to reinforce institutional priorities. Responsible stewardship requires organizational and operational effectiveness, proper investment in physical and technological infrastructure, and commitment to sustainability. Realization of the aims and implementation of the strategies will require:

- An implementation plan for the N2025 Strategic Plan
- Intentional and transparent allocation of resources to incentivize actions that align with the N2025 Strategic Plan
- Intelligent and sustainable investments in key university resources, and, in particular, people
- Development of a sustainable built environment and technology infrastructure to support N2025 Strategic Plan
- Creation of an incentive-driven and financially strong campus environment led by the N2025 Strategic Plan
- Systematic cost reductions across administration
- Formulation of a long-term road map for university operations that ensures sustainability, environmental resilience, and stewardship of natural resources

The university recognizes its significant responsibility to the citizens of the state of Nebraska and the need to be good stewards of all of its resources. This bold N2025 Strategic Plan, implemented well, will increase the value of the institution to the state of Nebraska.