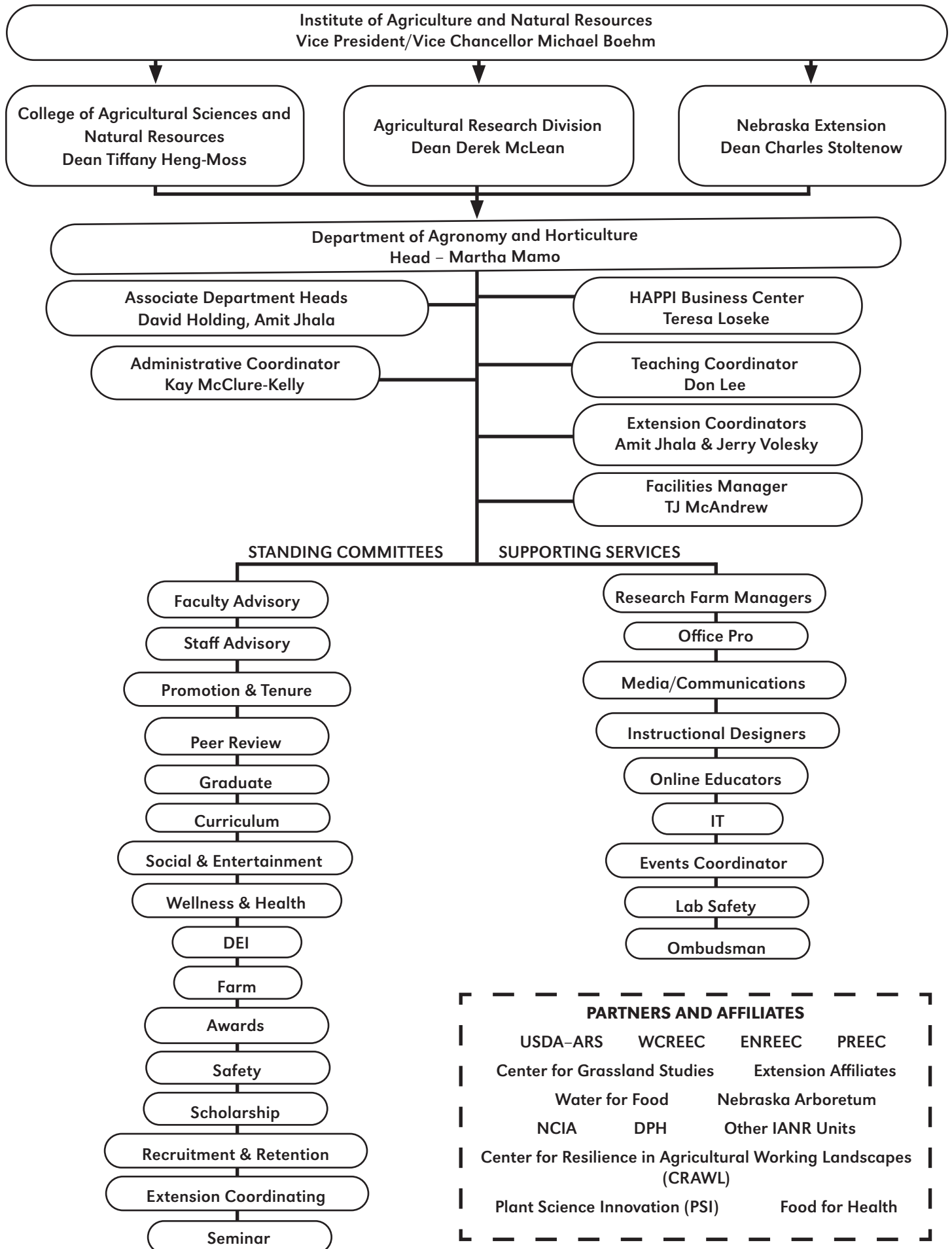


OVERVIEW APPENDIX 5

Department of Agronomy and Horticulture Governance Structure



Institute of Agriculture and Natural Resources
Vice President/Vice Chancellor Michael Boehm

College of Agricultural Sciences and Natural Resources
Dean Tiffany Heng-Moss

Agricultural Research Division
Dean Derek McLean

Nebraska Extension
Dean Charles Stoltenow

Department of Agronomy and Horticulture
Head - Martha Mamo

Associate Department Heads
David Holding, Amit Jhala

Administrative Coordinator
Kay McClure-Kelly

HAPPI Business Center
Teresa Loseke

Teaching Coordinator
Don Lee

Extension Coordinators
Amit Jhala & Jerry Volesky

Facilities Manager
TJ McAndrew

STANDING COMMITTEES

SUPPORTING SERVICES

- Faculty Advisory
- Staff Advisory
- Promotion & Tenure
- Peer Review
- Graduate
- Curriculum
- Social & Entertainment
- Wellness & Health
- DEI
- Farm
- Awards
- Safety
- Scholarship
- Recruitment & Retention
- Extension Coordinating
- Seminar

- Research Farm Managers
- Office Pro
- Media/Communications
- Instructional Designers
- Online Educators
- IT
- Events Coordinator
- Lab Safety
- Ombudsman

PARTNERS AND AFFILIATES

USDA-ARS	WCREEC	ENREEC	PREEC
Center for Grassland Studies		Extension Affiliates	
Water for Food		Nebraska Arboretum	
NCIA	DPH	Other IANR Units	
Center for Resilience in Agricultural Working Landscapes (CRAWL)			
Plant Science Innovation (PSI)		Food for Health	